

WHEN RECORDED RETURN TO:
 WHITE BEAR ANKELE TANAKA & WALDRON
 2154 East Commons Avenue, Suite 2000
 Centennial, CO 80122

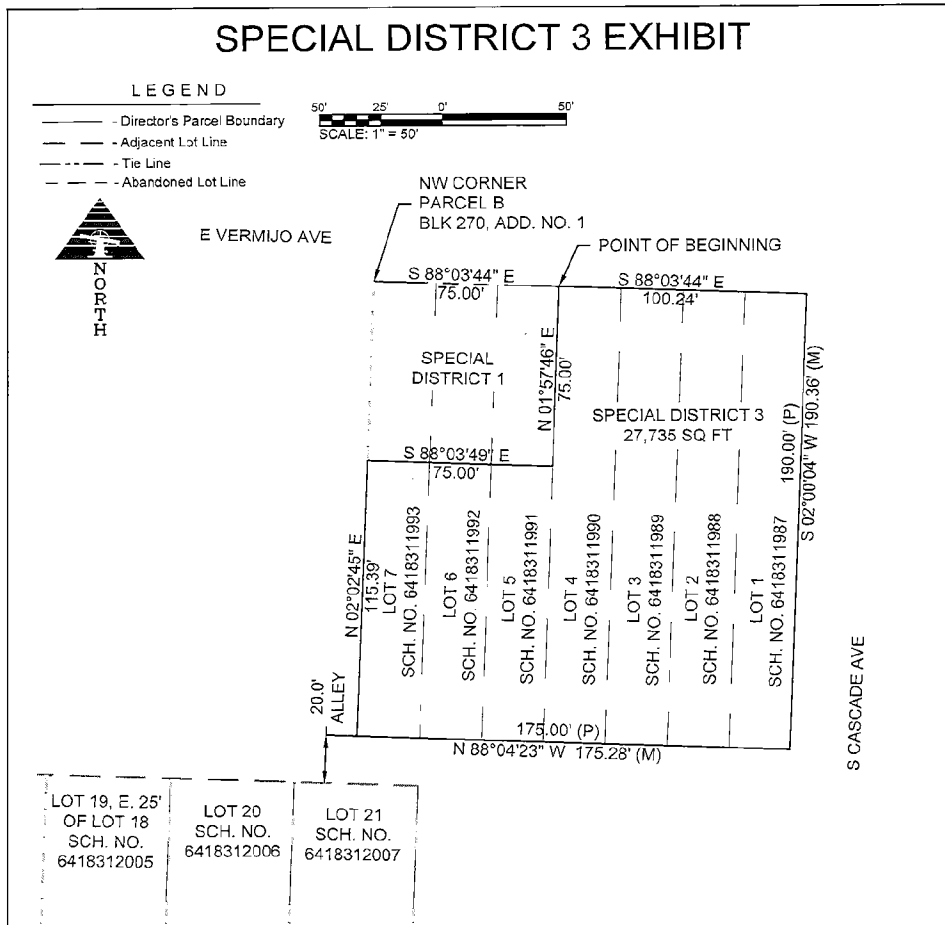
One Place Metropolitan District No. 3
 (In the City of Colorado Springs, El Paso County, Colorado)

SPECIAL DISTRICT PUBLIC DISCLOSURE

Pursuant to § 32-1-104.8 C.R.S.

Name of District:	One Place Metropolitan District No. 3 ("District")
Powers of the District:	All powers authorized in § 32-1-1004, C.R.S., including, but not limited to, fire protection, mosquito control, parks or recreational facilities or programs, traffic and safety controls, sanitation services, street improvements, television relay and translator facilities, transportation, water services, and solid waste disposal, subject to the limitations contained in the District's Service Plan.
Service Plan:	The District's Service Plan, which can be amended from time to time, includes a description of the District's powers and authority. A copy of the District's Service Plan is available from the Division of Local Government.
	One Place Metropolitan District No. 3 is authorized by Title 32 of the Colorado Revised Statutes to use a number of methods to raise revenues for capital needs and general operations costs. These methods, subject to the limitations imposed by section 20 of Article X of the Colorado Constitution, include issuing debt, levying taxes, and imposing fees and charges. Information concerning directors, management, meetings, elections and current taxes are provided annually in the Notice to Electors described § 32-1-809(1), C.R.S., which can be found at the District office, on the District's web site, on file at the Division of Local Government in the State Department of Local Affairs, or on file at the office of the clerk and recorder of each county in which the special district is located.
District Boundaries:	A map of the District's boundaries is attached hereto as Exhibit A. Please note that the District's boundaries may change from time to time. Please contact the District for the latest information.

EXHIBIT A District Boundary Map



PROPERTY DESCRIPTION:

Lots 1, 2, 3, 4, and the South 115 feet of Lots 5, 6, and 7, in Block 270, in Addition No. 1 to the City of Colorado Springs, El Paso County, Colorado more particularly described as follows:

Beginning at the Northwest Corner of said Lot 4, Block 270, Addition No. 1 to the City of Colorado Springs, El Paso County, Colorado; thence
 S 88°03'44" E 100.24 feet to the Northeast Corner of said Lot 1; thence
 S 02°00'04" W 190.36 feet to the Southeast Corner of said Lot 1; thence
 N 88°04'23" W 175.28 feet to the Southwest Corner of said Lot 7; thence
 N 02°02'45" E 115.39 feet along the West Line of said Lot 7; thence
 S 88°03'49" E 75.00 feet to the West Line of said Lot 4; thence
 N 01°57'46" E 75.00 feet to the point of beginning, containing 27,735 square feet.

Subject to easements and restrictions of record.



Civil Engineering • Land Surveying • Landscape Architecture
 www.smhconsultants.com
 Manhattan, KS - HQ P: (785) 776-0541 • Dodge City, KS P: (620) 255-1952
 Kansas City, KS P: (913) 444-9615 • Colorado Springs, CO P: (719) 428-8677

Drawn By: Project # DD #

